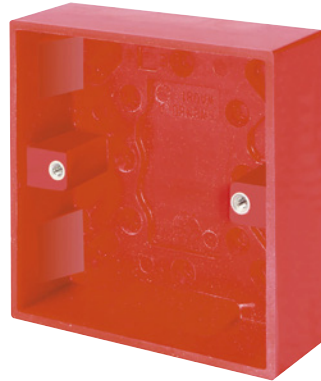


Product Code: WA081RD

Description: 1 Gang 25mm Deep Pattress Box



General Information

Dimensions	87mm (W) x 87mm (W) x 30mm (D)
Finish	Red
Materials	Pattress Box: Urea Threaded Lug: Brass
Earth Terminal Provided	No
Cable Restraint Provided	No
Back Box Knockouts	9 x 15mm x 15mm, 22mm x 27.5mm
Operational Temperature	-5°C to +40°C
Warranty	10 Years

Standards	BS 4662:2006+A1:2009
-----------	----------------------

Additional Information

Ensure that the mains supply is isolated before commencing installation and refer to the circuit diagram with the relevant product.
Bare earth cables must always be covered with appropriate sleeving and wired to the earth terminal. All urea moulded accessories are manufactured using Urea Formaldehyde, which has similar inherent properties to antimicrobial additives that inhibit the growth of infectious diseases.
All products have been independently tested and achieved a 99.9% kill rate across all four types of the strains of bacteria - MRSA, E-Coli, Salmonella, and Klebsiella Pneumoniae.